

Bio Blocks are a quick and easy solution for solid wall insulation. Bio block can be laid to either follow the contours of existing walls or straighten them up. For historic properties the blocks can easily be shaped with a rasp float to curve into timbers or create rounded edges.

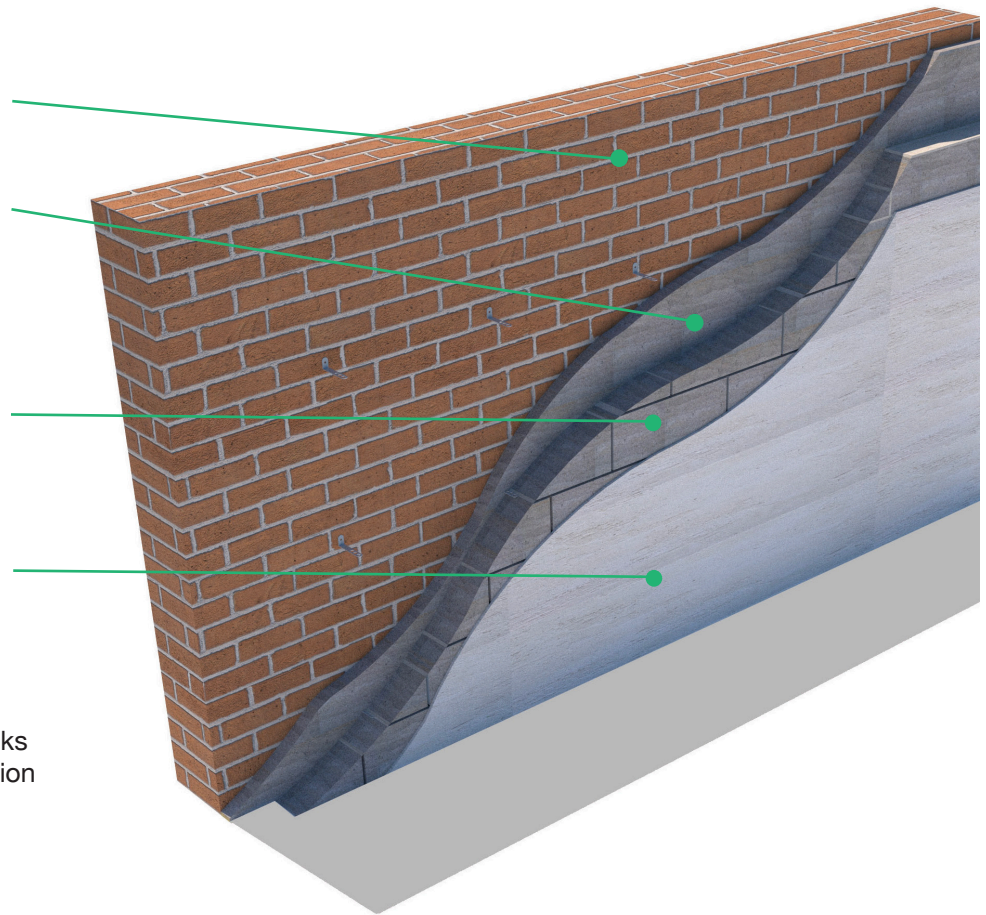
The wall ties are fixed to the existing wall with the appropriate screw and plug and stick out into the mortar joint. The blocks can be set off the wall and the gap between the wall and the blocks can be filled with dry loose hempcrete insulation. Services can be chased into the blocks.

Existing solid wall

Infill any gaps with loose hempcrete

Hempcrete blocks tied to masonry wall using stainless steel wall ties

Internal lime or clay plaster



The U-values below are of the blocks only and do not include any insulation value of the existing wall itself

- U= 0.875 @80mm thick
- U= 0.58 @120mm thick
- U= 0.35 @200mm thick
- U= 0.28 @250mm thick
- U= 0.23 @300mm thick
- U= 0.19 @360mm thick

